

TONI GLORIA IN EXCELSIS I

(Lux et origo)

Tempore paschali

Missa I

IV

G



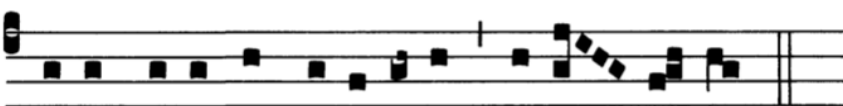
ló-ri- a in ex-cél-sis De- o.

A Missa Vigiliæ paschalis usque ad sabbatum in albis inclusive

Missa I

VIII

I

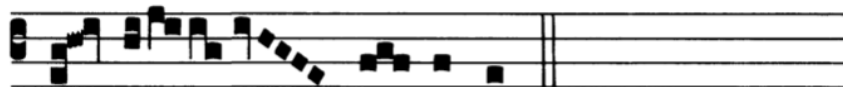


- te, missa est, al-le-lú-ia, al-le- lú- ia.

Ab octava Paschæ ad sabbatum IV Temporum Pent. inclusive

VII

I



- te, mis- sa est.

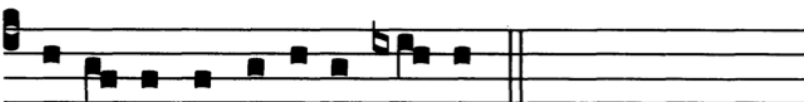
(Fons bonitatis)

In festis I classis 1

Missa II

I

G



ló-ri- a in ex-cél-sis De- o.

In festis I classis 1 et 2

Missæ II et III

V

I



- te, mis- sa est.

In festis II classis I

Missa IV

IV
G ló- ri- a in ex-cél-sis De- o.

In festis II classis I

Missa IV

I
I - te, missa est.

Credo I, II, IV

IV
C re- do in u- num De- um.

Credo III

V
C re- do in u- num De- um.

Quando post Missam sequitur aliqua processio, loco Ite, missa est, cantatur:

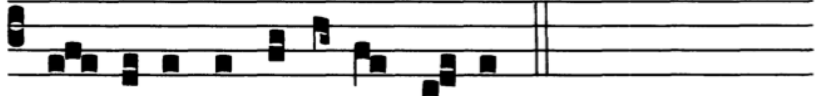
V
B e- ne- di- cá- mus Dó-
mi- no.

TONI GLORIA IN EXCELSIS II

(Cum iubilo)

In festis beatæ Mariæ Virginis I

Missa IX

VII
G 
ló- ri- a in ex-cél-sis De- o.

In festis beatæ Mariæ Virginis I et 2

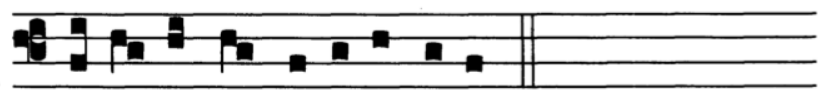
Missæ IX et X

I
I 
- te, mis- sa est.

(Orbis factor)

In dominicis per annum

Missa XI

II
G 
ló- ri- a in ex-cél-sis De- o.

In dominicis per annum et tempore Septuagesimæ

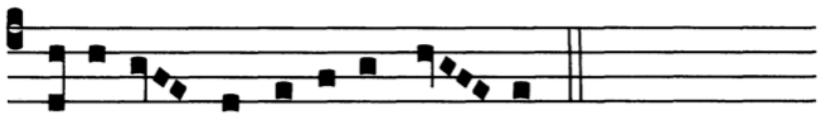
Missa XI

I
I 
- te, mis- sa est.

(Pater cuncta)

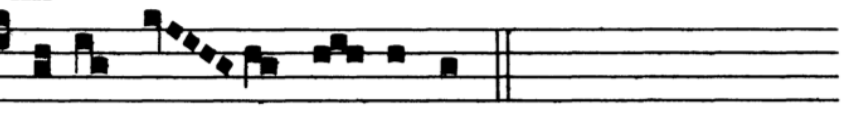
In festis III classis I

Missa XII

IV
G 
ló- ri- a in ex-cél-sis De- o.

In festis III classis I

Missa XII

VIII
I 
- te, mis- sa est.

In commemorationibus et feriis temporis natalicii

Missa XV

IV
G
 ló- ri- a in ex-cél-sis De- o.

In dominicis tempore Adventus, Quadragesimæ et Passionis, in Missis de commemoratione in Officio occurrente, in omnibus feriis extra tempus paschale, in vigiliis II et III classis et in Missa Rogationum

IV
I
 - te, mis-sa est.

Credo I, II, IV

IV
C
 re-do in u-num De- um.

Credo III

V
C
 re-do in u-num De- um.

Quando post Missam sequitur aliqua processio, loco Ite, missa est, cantatur:

V
B
 e-ne-di-cámus Dó-
 mi- no.

vel ad libitum:

B e- ne- di- cá-mus Dó-mi- no.

The musical notation consists of a single staff with a treble clef and a common time signature. The melody is written in a square-note style. It begins with a half note on G4, followed by quarter notes on A4, B4, C5, B4, A4, G4, and F4. The piece concludes with a double bar line.

In Missis defunctorum

R equi- é-scant in pa- ce.

The musical notation consists of a single staff with a treble clef and a common time signature. The melody is written in a square-note style. It begins with a half note on G4, followed by quarter notes on A4, B4, C5, B4, A4, and G4. The piece concludes with a double bar line.